

The Branch

–April Meeting & Luncheon–
Join us at 11 a.m. on April 21st
at TT Golf & Country Club
RSVP to Dot by Wed. NOON 4/15/09

The National League of American Pen Women, Inc.
Tampa Branch #88

Volume 9, Issue 4, April 2009

Editor, Marcia Wilson: mkwsolutions@verizon.net

Roving Reporter, Shirley Adema: shirleyadema@verizon.net

Website & Yearbook, Caroline McKeon: dreamweb@dreamweboffice.com

Meeting Liaison, Dot Setlow: d3rdbyrd@hotmail.com



President's Corner

This year is moving along rather fast or am I getting slower? Here it is spring and I am still trying to recover from the freezes we had. I have been pruning and planting new things in the garden, so I do think spring is in the air.

Marcia's workshop gave us a lot to think about. It helped us to group our thoughts and make our visions clearer on how we will steer our actions in a more productive manner during the remainder of the year. Thanks Marcia for a job well done. We had a most enjoyable day. The weather was nice and the air fresh.



DC is home to the Cherry Blossom Festival.

I'll be returning from Washington DC the night before, but I'll be looking forward to seeing each one of you on the 21st at our April meeting.

Meletha

It will be our pleasure to host our state president at our meeting this month. We want to have a large group in attendance so please try to make an extra effort to attend. Kathleen McDonald, an artist is from the Sarasota branch. She is down to earth and a very likeable person. You will enjoy meeting her. She is on the budget committee for national and doing a great job there.

Virginia Hallaway will present a music program for this month. As you recall from other programs she has done, you know this one will be wonderful as well. (See more about Virginia's program on page 3.)

It's time to pay our dues. Please come prepared to pay your national, state, and local dues for the year. They have to be sent off soon and we don't want to have to pay the late charge. If you aren't able to make the luncheon, please send your check to Caroline McKeon. (more on page 3)

I hope you have enjoyed the wonderful spring weather with the cool breezes. We sure better enjoy them while we can, summer is right around the corner and we know what that brings.



Annual Pen Women DUES are due at our April meeting or by mailing a check to Caroline McKeon. See page 3 for all of the details.



Pen Women News

Barb Routen and her husband, Mark, left Wednesday, April 8th to spend Easter with their son and Mark's cousin in France! They won't be back until after our April meeting.

Meletha gave a watercolor workshop at Zephyrhills Art Club. Participants were excited about doing a painting in the morning and one in the afternoon. Both of these were done wet-n-wet; however, they were painted using different techniques.

Meletha just received word from the Greater Brandon Arts Council and the Tampa Hillsborough County Expressway Authority that her art work has been chosen for the mural on the Fountain Tower at the corner of Lakewood and the Brandon Parkway in Brandon. The tower is 6' 2" wide and 17 feet tall. Meletha's painting is 15" x 41" and the mural will be 75" X 205". Huge congratulations!

Meletha participated in the Marcia's workshop, "Manifesting Your Visions" and in the "Celebrate The Arts" at Fishhawk Creek Elementary School. She is also in several writing groups which keeps her quite busy.

Virginia Holloway extends a thank you to all members who sent cards and made phone calls encouraging her to get well quickly. They were very helpful in keeping her spirits high.



Meletha's painting soon to be displayed on the Fountain Tower in Brandon.



April showers bring May flowers.

We Floridians are grateful for our day of rain on April 14th!

Pen Women News Items

Please do not hesitate to send Marcia your news, show information, poetry, stories, photographs, jpegs of your art, or anything else that you feel would be of interest to other members. For those members who do not have access to the Internet and email, know that you can call me with your information. This is our newsletter and a great way to stay in touch and share information. Thank YOU!

Email: mkwsolutions@verizon.net

Phone: (813) 980-0298

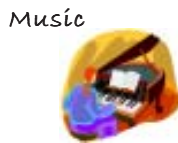
Mailing address: Marcia K. Wilson, 7610 Leon Avenue, Temple Terrace, FL 33637



March Meeting Presentation

Meletha presented *Gunni Price's* official certificate of membership from National.

Please don't forget to keep inviting friends and/or prospective members to our monthly lunch meetings!



April Meeting Presentation

Tampa Pen Woman, *Virginia Rhan Holloway* will tell the story of, and perform music written by a famous American Pen Woman, **Carrie Jacobs Bond**. Her remarkable creative talent in letters, art, and music is legendary.

Carrie was a woman dedicated to succeed in a man's domain in spite of daunting tragedy. You will find a personal connection through recognition of her music, and discovery of persistent courage that accompanied her beautiful life.

Important message from our Treasurer:

Annual Pen Women DUES are due. If you joined *after* January 1st, then you do not owe renewal dues.

- State dues are \$5
- National dues are \$40*
- Branch dues are \$10

Make your check payable to: **Tampa Pen Women for \$55.**

One check covers all three parts of your dues. You may bring your checks to the April 21st meeting or you may mail them to:

Caroline McKeon
 11404 SunCreek Place
 Temple Terrace, FL 33617

* NOTE: Lifetime members may ignore the national portion of the dues.

The **Tampa Branch of the NLAPW** meets the third Tuesday of each month from September through May.
 Location: Temple Terrace Golf & Country Club, 200 Inverness Avenue, Temple Terrace, FL 33617

We gather at 11 AM to socialize and our meeting starts promptly at 11:30 a.m. Lunch is \$7.50 per person.
 Please join us and bring a guest. Reservations are requested by the Thursday prior to the meeting.

NLAPW Tampa Branch
March 17, 2009 Meeting Minutes

President Meletha Everett called the meeting to order at 11:30 a.m. She compared creativity with the seasons: there are times of rest, as nature has in winter; during dry periods, we can do other things; spring always follows winter; no season, even summer's heat, ever lasts forever. She read an Irish blessing. We said the Pledge of Allegiance to the flag. There were 14 members present and no visitors.

Meletha presented Gunni Price's official certificate of membership from National.

The 11 members who attended Gainor Roberts's digital photography workshop said it was great. There were six no-shows. Workshop reservations that cannot be used should be cancelled in advance, please.

Because several of our members—specifically Shirley Adema and Marge Raus—are ill or homebound, Staci Backauskas suggested someone volunteer for a particular week to contact them so they are not so alone. Every week for a month was taken.

Minnette submitted a motion that the Tampa Branch of the National League of American Pen Women become a sponsor for an outreach project that brings art instruction to the Hillsborough Correctional Institution for Women in Riverview. The motion was made, seconded, discussed and accepted unanimously by those members who were present. Sponsorship details will be worked out in the future.

Minnette said there are 40 current students plus 10-15 more at nights and on the weekends. \$170 worth of supplies lasts about 1 month; the program costs about \$3,000-\$4,000 per year. Last year's inmate art show brought in about \$2,000. Released prisoners sometimes send in money for the program. Minnette cannot apply again for the two grants she received before.

She has two projects in mind that the branch could help finance: 1) making portfolios for each inmate and/or 2) providing specific, necessary supplies. How could we raise money to help?

Dee DeVane "desperately needs a reliable agent." Does anyone have any suggestions?

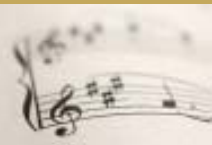
Judy Johnson and Gainor won a drawing for shamrock plants from Meletha. I, Barbara Routen, won the 50/50 = \$5.50. (Thank you very much!)

A discussion was held about what should be included in an informational brochure for our branch. Send input to Dot Setlow and Staci, who will have a rough draft by the next meeting.

Barbara Routen, Secretary



Brigitte Mailahn



~ REMINDER ~



April 21st Meeting & Luncheon

Please join us for a very special April meeting!

Date: April 21st

Time: 11:00 a.m.

Location: Temple Terrace Golf & Country Club

RSVP by NOON on Wednesday the 15th

Dot Setlow: 813-238-0127 or d3rdburd@hotmail.com

April & May Birthdays (B) & Anniversaries (A)

4/5	B	Peggy Little
4/10	A	Brigitte Mailahn
4/25	A	Robbie Miles
4/30	B	Susan Weillbacher
5/11	B	Sheila Blow
5/12	B	Shirley Adema
5/15	A	Mary Ellen O'Brien
5/16	B	Carolyn Matheny
5/18	B	Roxanne Tobaison
5/22	B	Carol Karow