

# The Branch

The National League of American Pen Women, Inc.  
Tampa Branch #88

Volume 8, Issue 10 **October 2008** [www.flpw.org](http://www.flpw.org)  
Editor, Marcia Wilson: [mkwsolutions@verizon.net](mailto:mkwsolutions@verizon.net)  
Roving Reporter, Shirley Adema: [shirleyadema@verizon.net](mailto:shirleyadema@verizon.net)  
Website & Yearbook, Caroline McKeon: [dreamweb@dreamweboffice.com](mailto:dreamweb@dreamweboffice.com)

–October Meeting & Luncheon–  
Join us at 11 a.m. on Oct. 21<sup>st</sup>  
at TT Golf & Country Club  
RSVP to Caroline by NOON on 10/15/08



## President's Corner

It was great to see so many of you at our kick off meeting. It would be great to have crowds like that all the time. We are looking forward to a great year, and I am sure we will, if we use the items in the September meeting gift bags.



To keep creativity active in our lives comes with some work on our part. Sometimes we need to switch gears and try something new or maybe have a different perspective or learn a new technique. Let us be creative in our daily lives searching for new ways to keep us fresh, alert, and excited about things we have to do.

I went to a women's retreat in Boca Raton for a weekend based on the book Women of the Art written by fellow Pen Woman, Jean Holmes. Mrs. Noah was portrayed by Mary Margaret Buss from Houston. I did a series of paintings for this event. It was arranged for me to stay with a delightful lady, Bonnie Allen of the Boca Branch. What a creative weekend!

Looking forward to seeing everyone at our October 21<sup>st</sup> meeting – visitors and prospective members are always welcomed!



*Meletha*

### Travel Writing Workshop

*Travel Writing* by photojournalist Sandy Huff (Clearwater Pen Woman). This event is free and open to the public.

Please make an extra effort to attend our collaborative "Outreach" program with the Clearwater Branch. Come learn from Sandy's expertise. Bring a friend too!

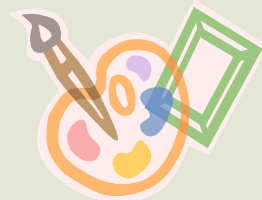
Date: **Monday, October 6<sup>th</sup>**  
Time: 10 AM to Noon  
Location: Bloomingdale Regional Library  
1906 Bloomingdale Avenue  
Valrico, FL 33594  
(813) 273-3652

Light refreshments will be served.  
Bring materials to take notes.

*Meletha*

### October Program Reminder ~

Please remember to bring a **small picture frame** and **craft supplies** for Staci's program in October.



Staci will talk about **Haiku** and invigorate everyone's creativity so you can write and create your own!

View more of Staci's *Haiku* at [www.JaiCreations.Etsy.com](http://www.JaiCreations.Etsy.com).



## Pen Women News

**Caroline** McKeon has been named the National Finance Chair by NLAPW President, Taylor Collins in Washington. She will oversee the national budget as presented by the national treasurer, and prepare Cash Flow Projections to present to the National Board.

**Meletha** Everett took one of the September meeting gift bags to Marge Raus at Zephyr Haven Nursing Home where she is receiving therapy to get back on her feet. Marge will get to go home soon.



**Nelida DiLorenzo** teaching a class and at work in her studio with her little helper!



From **Stephanie Moreland**: Down here in Southeast Texas, we ask for prayers and support for the victims of Hurricane Ike. Although my family and I are fine, there are many people who lost everything in this storm, and there are still hundreds of people not accounted for. Things are much worse down here than what is being shown on the national media, and there are people that need help, support, and prayers. We expect that the loss of lives and other damage will be far beyond what anyone expected.

Thank you for your prayers—these poor people really need them right now. [stephanie@morelandwrites.com](mailto:stephanie@morelandwrites.com)



Judy Freeman joined Meletha in presenting Deb O'Reilly the certificate of membership.



Virginia Hallway with her new piece.



Admiring work of Minnette's students.

## Member Workshop

### Dunedin Fine Arts Workshop

**A Modern Approach to Egg Tempera\* with GAINOR**

Date: November 15 & 16, 2008

Time: 9 AM to 4 PM

Location: Dunedin Fine Arts Center

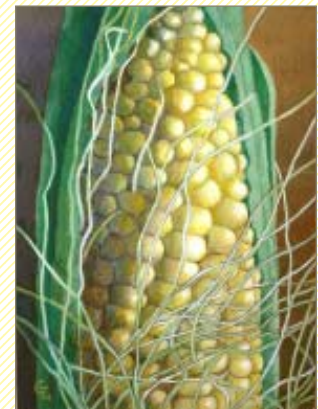
1143 Michigan Blvd.

Dunedin, FL 34698

\*Workshop includes all supplies

Register by calling: 727.298.DFAC (3322) or call **Gainor Roberts** at (813) 469-1641 or (813) 779-3570

Visit: [www.dfac.org](http://www.dfac.org) plus [www.gainor.biz](http://www.gainor.biz) and [www.gainor.blogspot.com](http://www.gainor.blogspot.com)





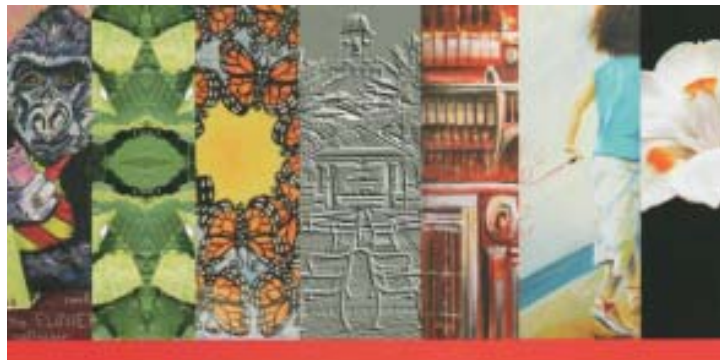
## Member Exhibitions

The **Paint Box Studio** invites you to their **Then and Now** exhibition on display through the month of October at Center Place gallery. Please come visit and enjoy the show!

Opening Reception: Sunday, October 12<sup>th</sup>  
Time: 3:30 to 5:30 PM  
Address: 619 Vonderburg Drive, Brandon, FL 33511

Pen Women represented in this show are: **Sandra Cameron, Yvonne Crissey, Carlene Earl, Meletha Everett, Judy Johnson, Peggy Little, Angela Santos, Val Titus, Susan Weilbacher**, and *potential* future member **Melinda Albritton**.

These artists have painted together for more years than one can count. The artwork will include a variety of medium and sizes, including well recognized and awarded miniatures.



Westchase ARTISTS Society at Great Art and Frame in West Park Village From Oct 3rd to Nov 1st

The **Westchase Artist's Society** is having a group show at the *Great Art and Frame in West Park Village*. Exhibiting Pen Woman artist, **Judy Freeman**, invites you to the opening on October 3<sup>rd</sup>. The show runs through November 1<sup>st</sup>.

Opening Reception: Friday, October 3<sup>rd</sup>  
Time: 7 to 9 PM  
Address: 9906 W. Linebaugh Avenue  
Tampa, FL  
Phone: 813-792-8960

Pen Women members **Mary Ellen O'Brien, Sheila Blow**, and **Gainor Roberts** are exhibiting for the month of October at the **Deltona Arts & Historical Center**.

Opening Reception: Saturday, October 11<sup>th</sup>  
Time: 1 to 4 PM  
Address: 682 Deltona Blvd, Deltona, FL

The exhibit is held in conjunction with the Central West Region of the Florida Committee of the National Museum of Women in the Arts.

### CENTRAL WEST REGION OF NMWA/FL



The **Tampa Branch of the NLAPW** meets the third Tuesday of each month from September through May. Location: Temple Terrace Golf & Country Club, 200 Inverness Avenue, Temple Terrace, FL 33617

We gather at 11 AM to socialize and our meeting starts promptly at 11:30 a.m. Lunch is \$7.50 per person. Please join us and bring a guest. Reservations are requested by the Thursday prior to the meeting.

# September 16<sup>th</sup> Meeting Minutes

## I. Call to order

President Meletha Everett called the meeting to order at 11:30 AM on September 16, 2008 at Temple Terrace Golf and Country Club. She read inspirational, creative words. We recited the Pledge of Allegiance.

## II. Opening business

A roll call sheet was marked with those present—25 members and two guests—“a record,” Caroline McKeon said. Caroline noted that everyone was in attendance who had said they were coming.

Dot Setlow offered to make meeting-reminder calls to those without e-mail. Guests were Debora Coty an author (visit [www.deboracoty.com](http://www.deboracoty.com)) and Melinda Albritton who is a painter.

Judy Freeman joined Meletha in presenting Deb O'Reilly the certificate of membership from National. Congratulations, Deb, on acceptance into the NLAPW-Tampa Branch and the national organization!

Caroline McKeon gave the treasurer's report; the total funds are \$1479.33.

Placards about characteristics of creativity were read by table representatives. Peggy Little read about *surprise*; Minnette Webster, about *being different*; Carol Karow, *new vision*; Staci Backauskas, *courage*; Caroline McKeon, *perspective*.

Meletha told members about a free, *Travel Writing Workshop* by photojournalist Sandy Huff (Clearwater) from 10 a.m. to noon Monday, Oct. 6, at the Bloomingdale Regional Library, 1906 Bloomingdale Ave., Valrico, cosponsored by the Clearwater and Tampa NLAPW. Your attendance is encouraged. Please invite others!

## III. Program

Meletha read key words for the branch – inspiration, knowledge and professionalism – to encourage creativity. She reminded those present that NLAPW is unusual in that it began as a national organization which only later sprouted branches. Its colors are red, white and blue (from the flag), its bird is the owl (for wisdom), its motto is “All for one, one for all” (from *The Three Musketeers*) and its flower is the red rose.

Judy Johnson won \$10.50 from the 50/50 drawing. Thanks, all, for donating to the fund by buying tickets!

Each member described what she did over the summer and many displayed their work. It appears to have been a very creative, productive and renewing season for all.

## IV. New business

Workshop surveys were collected. Results will be communicated after they are compiled. The meeting was adjourned at 1:40 p.m.

Barbara Routen, Secretary



Brigitte Mailahn

### ~ REMINDER ~

#### October 21<sup>st</sup> Meeting & Luncheon

Please join us for our October meeting and luncheon. Staci Backauskas will inspire you to create an original Haiku!

**Date:** Tuesday, October 21<sup>st</sup>

**Time:** 11:00 a.m.

**Location:** Temple Terrace Golf & Country Club



**RSVP by NOON on Wednesday the 15<sup>th</sup>**

Caroline McKeon [dreamweb@dreamweboffice.com](mailto:dreamweb@dreamweboffice.com)

#### October / November Birthdays (B) & Anniversaries (A)

10/4	B	Marjorie Raus
10/4	B	Angela Santos
10/9	B	Sandra Cameron
10/18	B	Minnette Webster
10/24	B	Judy Johnson
10/28	A	Meletha Everett
10/30	B	Caroline McKeon
11/2	A	Judy Freeman
11/6	A	Nelida DiLorenzo
11/15	B	Mary Ellen O'Brien